

VREMYA – CH
Joint Stock Company

FREQUENCY COMPARATOR

VCH-314

Hardware Operational Manual

411146.014HOM



Osharskaya str., 67, Nizhny Novgorod, 603105, Russia
tel./ fax +7 (831) 421-02-94, <http://www.vremya-ch.com>

<i>Инв. № подл.</i>	<i>Подп. и дата</i>	<i>Взам. инв.№</i>	<i>Инв. № дубл.</i>	<i>Подп. и дата</i>

Contents

1 Designation	2
2 Technical specifications	2
3 Instrument set composition	4
4 The simplified comparator's scheme	5
5 Measurements performing	8
5.1 Operating controls and connectors.....	8
5.2 Signals connecting	10
5.3 Choosing of the measurement parameters	10
5.4 Measurement error	11
5.5 Measurements schemes.....	12

1 Designation

The frequency comparator VCH-314 is intended for precise instability measurements of standard frequencies 5 or 10 or 100 MHz (in combination with external Personal Computer).

The main comparator applications:

- crystal and quantum frequency standards production and checking,
- time keeping systems,
- scientific measurements.

2 Technical specifications

2.1 Input frequency: 5 or 10 or 100 MHz.

2.2 Input signals level: (0.6 – 1.2) V on 50 Ohm load.

2.3 Relative frequency difference multiplication factor – K : 1×10^6 or 1×10^3 .

2.4 Frequency fluctuations passband – B : (10±3) Hz or 3 Hz* (* – performed by digital filtering) for $K=1 \times 10^6$ and (10±3) kHz for $K=1 \times 10^3$.

2.5 Relative difference of input signal's frequency:

$$\pm 1.0 \times 10^{-8} \text{ for } K=1 \times 10^6,$$

$$\pm 1.0 \times 10^{-6} \text{ for } K=1 \times 10^3.$$

2.6 Parameters of output signal's (Fx, Fxy1, Fxy2 on 50 Ohm load:

- nominal frequency:

Fx output – 1 Hz;

Fxy1 and Fxy2 outputs – 1 Hz for 10 Hz passband, 100 Hz for 3 Hz passband;

- polarity of pulses: positive;
- low-level voltage: not more 0.4 V;
- high-level voltage: not less 2.4 V;

2.7 Introduced by the comparator frequency instability (*two-sample Allan variance*)

– $\sigma_y(\tau) = \sqrt{\sigma_m^2(\tau) + \sigma_{ao}^2(\tau)}$, where: $\sigma_m(\tau)$ – main error ($\Delta f/f=0$); $\sigma_{ao}(\tau)$ – additional error (when $\Delta f/f \neq 0$); τ – averaging time, from 1 s up to 500000 s.

2.8 The main error for one channel and two channels measuring mode for the case where $K=1 \times 10^6$, $B=3$ Hz: not more values given in table 2.1.

Table 2.1

Averaging time, τ	Main error, two-sample Allan variance ($K=1 \times 10^6$, $B=3$ Hz)	
	“Two-oscillators, one-channel” mode, $\text{var}^2(F_{xy1}), \text{var}^2(F_{xy2})$	“Three-oscillators, two-channels” mode, $\text{var}^2(F_x)$
1 s	8.0×10^{-14}	2.0×10^{-14}
10 s	2.0×10^{-14}	5.0×10^{-15}
100 s	3.0×10^{-15}	1.5×10^{-15}
1000 s and more	5.0×10^{-16}	5.0×10^{-16}

Notes:

1. Introduced by the comparator main error is guaranteed after settling time according p. 2.11, when signals are connected to the inputs.

2. Introduced by the comparator main error for averaging time 1000 s and more is guaranteed provided that ambient temperature changes not more than $1^\circ\text{C} / \text{hour}$.

2.9 The main error for one channel and two channels measuring mode for the case where $K=1 \times 10^3$: not more $1.0 \times 10^{-11} \text{ s}/\tau$ (but “floor” is not more 5.0×10^{-16}).

2.10 The additional error ($\sigma_{ao}(\tau)$): not more than $2.0 \times 10^{-3} \Delta f/f$.

2.11 Settling time:

- 2 h, for averaging times not more 100 s;
- 4 h, for averaging times more 100 s.

2.12 Management of the frequency comparator VCH-314, displaying and recording of results of the frequency instability measurement is carried out using a personal computer and special software that came with the device (see the document “Frequency comparator VCH-314. Operational Manual”, “VREMYA-CH” Joint Stock Company, Nizhny Novgorod, 2010). Transfer of monitored data and receiving of control commands produced by RS-232 interface.

System requirements: Intel Pentium-IV, 2 GHz, 512 Mb RAM, Windows XP/Vista/7/8.

2.13 Power supply voltage: (198 – 242) V AC, 50; 60 Hz.

2.14 Power consumption: not more 30 V·A.

2.15 Ambient temperature: from $+5^\circ\text{C}$ up to $+40^\circ\text{C}$.

2.16 Weight: not more 8 kg.

2.17 Dimensions (W×H×D): 236×140×370 mm.

3 Instrument set composition

The frequency comparator set composition is given in the table 3.1.

Table 3.1

№	Model and designation	Quantity
1.	Frequency comparator VCH-314	1
2.	Power connecting cord	1
3.	RS-232 interface cable 685670.026	1
4.	Power splitter ZFSC-2-1W+	2
5.	RF interconnecting SMA / BNC cable 685670.154 (0.2 m)	4
6.	RF interconnecting BNC / BNC cable 685670.154-01 (1.5 m)	2
7.	Frequency comparator VCH-314 Installation disc	1
8.	Frequency comparator VCH-314 Hardware Operational Manual	1
9.	Frequency comparator VCH-314 Software Operational Manual	1

4 The simplified comparator's scheme

The simplified scheme of the VCH-314 is given on fig.4.1.

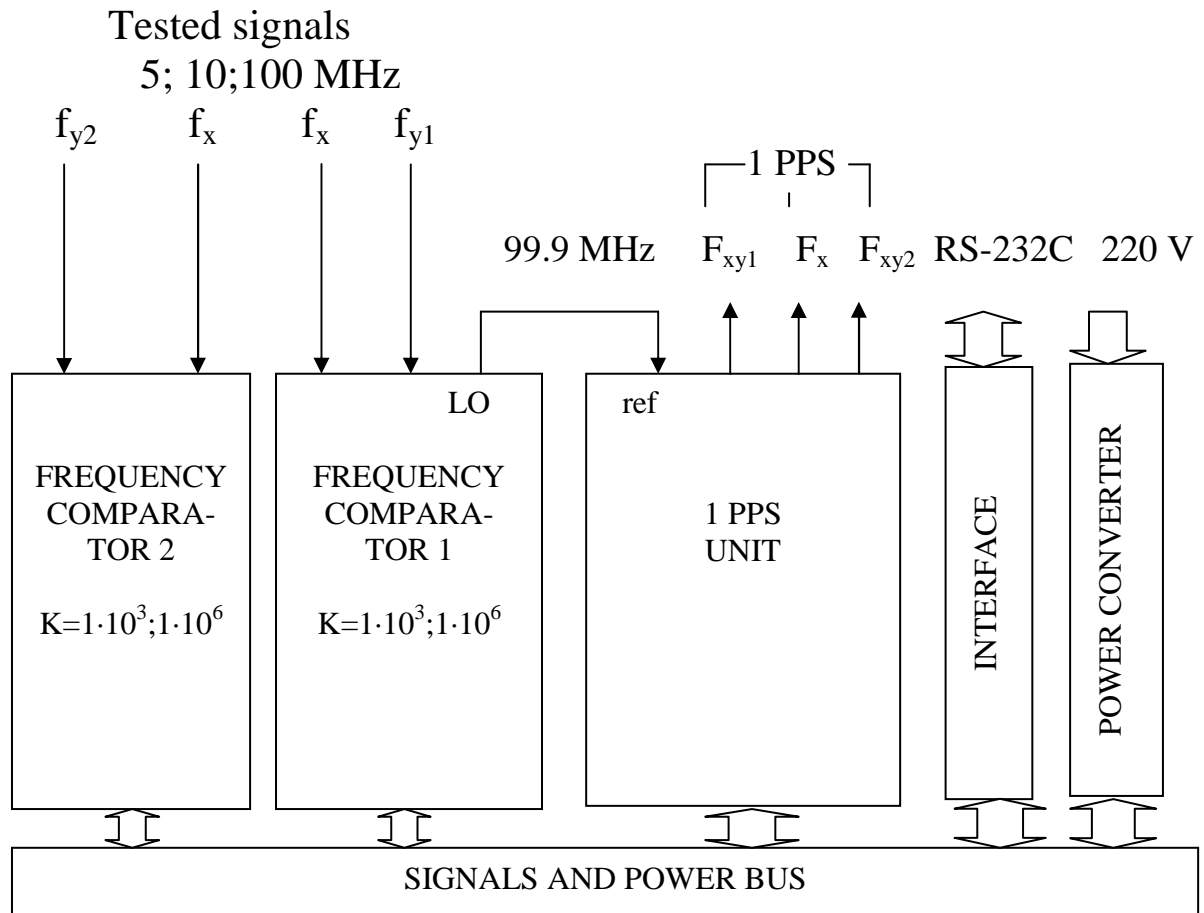


Fig. 4.1

The comparator contains: two identical modules – FREQUENCY COMPARATOR 1, FREQUENCY COMPARATOR 2, 1 PPS UNIT, INTERFACE and POWER CONVERTER.

We have four input signals – f_x , f_{y1} at the first frequency comparator and f_x , f_{y2} at the second comparator.

FREQUENCY COMPARATOR 1, 2 multiplies relative frequency difference of input signals by multiplication factor $K=1 \cdot 10^3$ or $1 \cdot 10^6$. Physical passband of the comparator related to phase and frequency fluctuations is (10 ± 3) Hz. Output signals of the comparator F_{xy1} , F_{xy2} (after multiplication) and reference signal F_x through the SIGNALS AND POWER BUS are connected to 1 PPS UNIT, which is dual TIME INTERVALS RECORDER.

For comparators' output signal frequency we can use relations:

$$F_{xy1} = F_x \left(1 + K \frac{f_{y1} - f_x}{f_x} \right) \quad (4.1)$$

$$F_{xy2} = F_x \left(1 + K \frac{f_{y2} - f_x}{f_x} \right) \quad (4.2)$$

As a reference input (counting frequency) for 1 PPS UNIT we use the signal of the local crystal oscillator (LO) of frequency 99.9 MHz. In addition this device produce three 1 PPS signals F_{xy1} , F_{xy2} and F_x , to feed external TIME INTERVALS COUNTER. Frequency of signals F_{xy1} , F_{xy2} we can set both 1 Hz or 100 Hz. Reference 1PPS signal F_x is made of 99.9 MHz signal by frequency division. When signal of frequency 5 or 10 or 100 MHz is connected to f_x input, the 99.9 MHz signal is phase locked to f_x signal, otherwise it is free running. At the TIME INTERVALS RECORDER output each second we have data $Y1_i$ and $Y2_i$ which are averaged on L samples time moments, corresponding to F_{xy1} and F_{xy2} pulses. For more detail understanding see fig. 4.2:

$$Y1_i = \frac{1}{L} \sum_{j=1}^L t_{xy1,i,j} \quad (4.3)$$

$$Y2_i = \frac{1}{L} \sum_{j=1}^L t_{xy2,i,j} \quad (4.4)$$

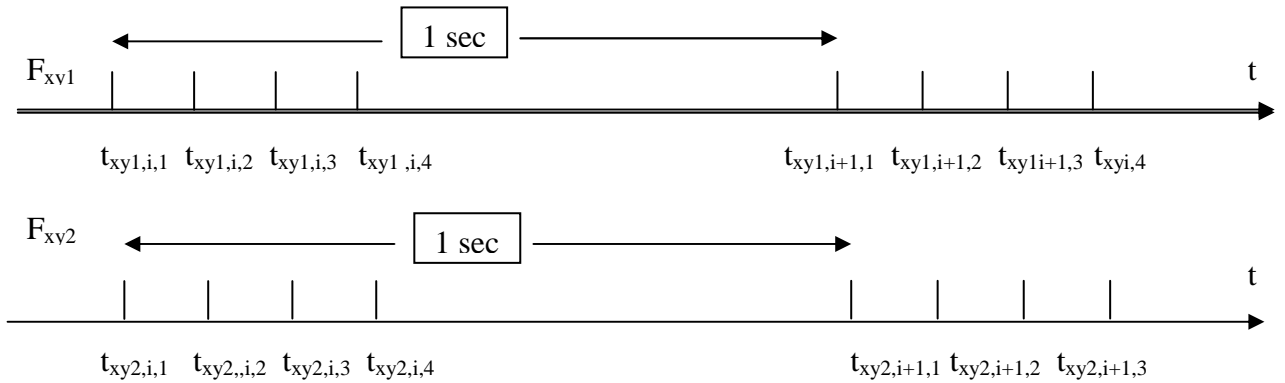


Fig. 4.2

Sampling time: $T=10$ ms. We use averaging to change effective passband B_e of the comparator.

Frequency response of the comparator, affecting tested signal phase fluctuations spectra (in power units) is close to

$$W^2(f) = \frac{f_h^2}{f^2 + f_h^2} \frac{\text{Sin}^2(L\pi f T)}{(L\pi f T)^2} \quad (4.5)$$

Where: $f_h = B/2=5$ Hz – physical width of passband.

The Software allows to set $L=1$ (no averaging, $B_e=B=10$ Hz) and $L=32$ ($B_e\approx 3$ Hz). $W^2(f)$ function's diagram, when $B=10$ and 3 Hz ($L=32$) we can see on fig. 4.3.

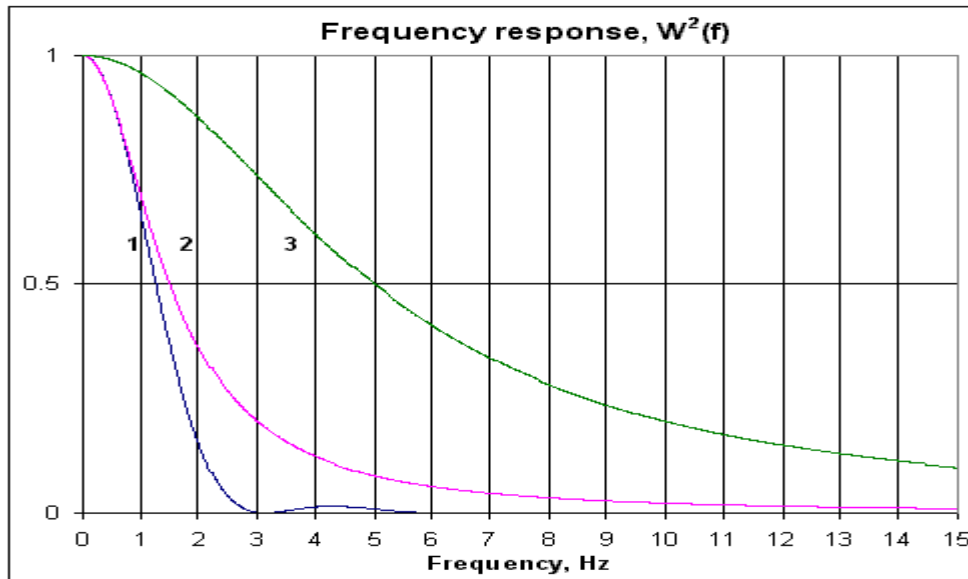


Fig. 4.3 The VCH-314 phase fluctuations frequency response.

- 1 – the VCH-314 real frequency response, $B=3$ Hz;
- 2 – first order analogue filter frequency response, $B=3$ Hz;
- 3 – the VCH-314 analogue filter frequency response, $B=10$ Hz.

In this case relative frequency difference $y_{xy1,i}$ and $y_{xy2,i}$, measured on $\tau=M$ seconds can be calculated by the formula ($M=1, 2, \dots$ – multiplier to change τ value):

$$y_{xy1,i}(\tau) = \frac{1}{K} \left(\frac{\tau}{Y1_{i+M} - Y1_i + \tau} - 1 \right) \quad (4.6)$$

$$y_{xy2,i}(\tau) = \frac{1}{K} \left(\frac{\tau}{Y2_{i+M} - Y2_i + \tau} - 1 \right) \quad (4.7)$$

When measurements in different channels were made simultaneously (after special channels' synchronisation) we have:

$$y_{y1,y2,i} = y_{xy2,i} - y_{xy1,i}. \quad (4.8)$$

Having $y_{xy1,i}$, $y_{xy2,i}$ and $y_{y1,y2,i}$ values we can use “three-oscillator mode“, specifying frequency instability each of three oscillators [1] (see VCH-314 Software Instruction Manual).

INTERFACE is interface of type RS-232 between Comparator and Personal Computer.

5 Measurements performing

5.1 Operating controls and connectors

5.1.1 Operating controls and connectors are located on front and rear panels of the comparator (see fig.5.1 and fig.5.2).

Operating controls of front panel is given in the table 5.1.

Table 5.1

Position number (fig. 5.1)	Name	Designation
1	POWER	Power ON/OFF indicator
2	Fxy1	Channel XY1 output signal indicator (flashing each 1 second when both of input signals f_x and f_{y1} is present)
3	Fxy2	Channel XY2 output signal indicator (flashing each 1 second when both of input signals f_x and f_{y2} is present)
4	F _x	Output reference signal indication (flashing each 1 second)

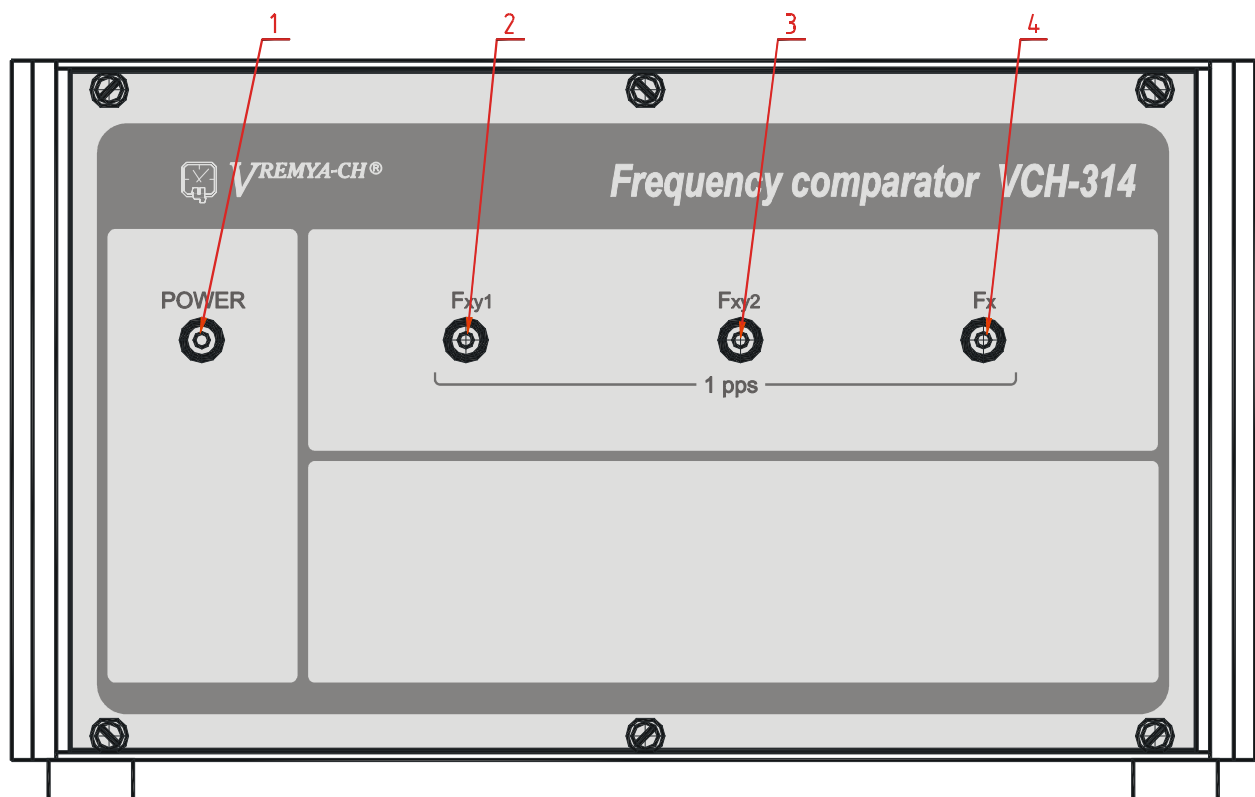


Fig. 5.1

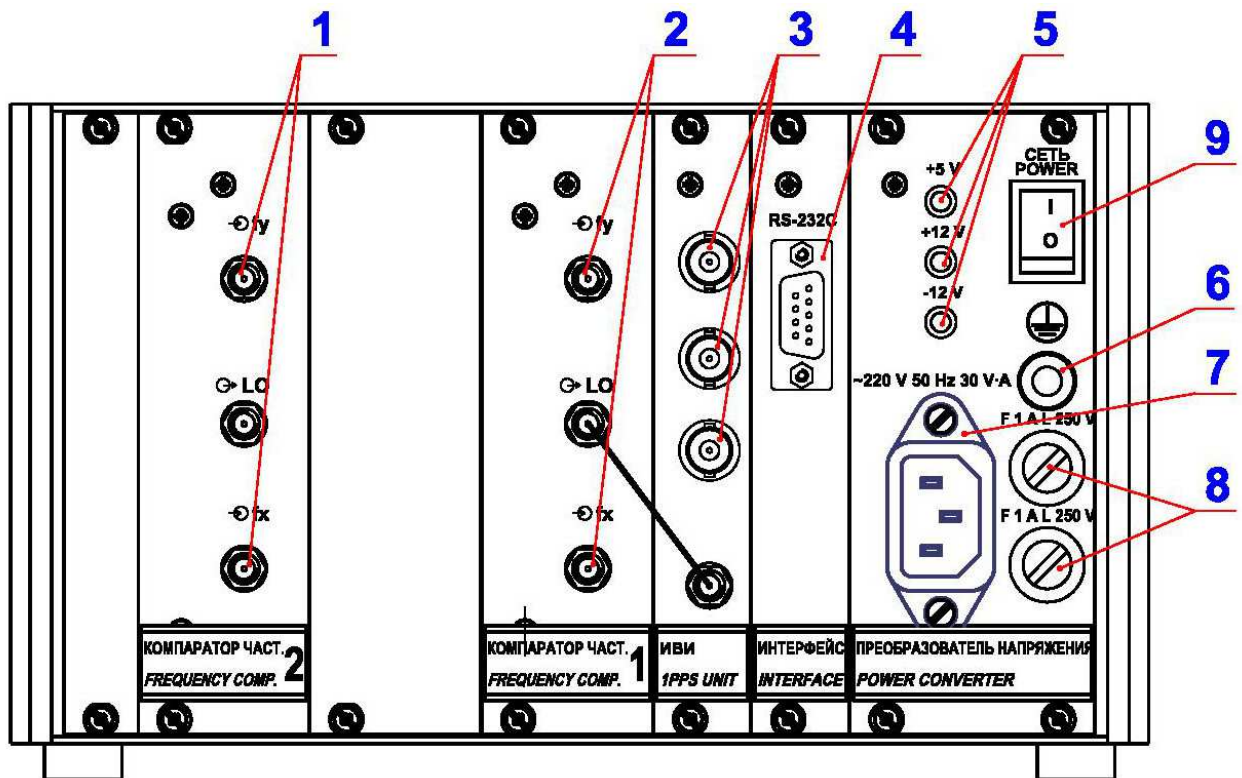


Fig. 5.2

5.1.2 Rear panel controls and connectors is given in the table 5.2.

Table 5.2

Position number (fig. 5.2)	Name	Purpose
1	$-\phi_{fx}, -\phi_{fy}$	The second comparator's inputs
2	$-\phi_{fx}, -\phi_{fy}$	The first comparator's inputs
3	$\oplus 1$ PPS Fxy1, Fxy2, Fx	1 PPS outputs for external time interval counter
4	RS-232C	Interface connector
5	+5 V, +12 V, -12 V	Lamps indicating DC power supply voltages
6	\oplus	Ground connector
7	220 V, 50 Hz, 30 V·A	AC power connector
8	F1 AL 250 V	Fuse holders
9	POWER	power ON/OFF switch

5.2 Signals connecting

5.2.1 Use special cable and connect the RS-232C port of the comparator to COM port of PC.

Caution!

To prevent comparator's interface damage do not connect comparator and computer when comparator is in POWER ON condition.

5.2.2 Plug in power cable and set the POWER switch ON. POWER indicator should light.

5.2.3 Supply input signals to the comparator using one of measurement scheme (see Section 5.4). Warm up the comparator according the table 5.3.

Table 5.3

Desired averaging time, τ	Warm up time
$\tau \leq 100$ s	2 h
$\tau > 100$ s	4 h

5.2.4 Set measurement parameters according to item 5.3 and Software Operational Manual and start to measure.

5.3 Choosing of the measurement parameters

Before measuring you should set correct measurement parameters which you need:

- multiplication factor – K : (1×10^3 or 1×10^6);
- passband – B : (10 Hz or 3 Hz);
- maximal averaging time – T .
- number of averages – N .

These values determines the following factors:

- maximal measured frequency difference;
- desired measurement resolution and error;
- desired measurement time.

Maximum possible frequency difference (y_{max}) depends on the multiplication factor K and should not exceed $1.0 \cdot 10^{-6}$ for $K=1 \times 10^3$, and 1.0×10^{-8} for $K=1 \times 10^6$.

Averaging time, τ can be set from 1s up to 500000 s.

Passband $B=10$ kHz for $K=1 \times 10^3$ and 10 or 3 Hz for $K=1 \times 10^6$.

Measurements frequency resolution (y^*) is calculated by the formula:

$$y^* = \frac{10^{-8}}{K\tau} \quad (5.1)$$

Attention!

For multiplication factor – $K=1 \times 10^3$ statistical functions describing the frequency instability for the separate signal ($\text{var}\{F_x\}$, $\text{var}\{F_{y1}\}$, $\text{var}\{F_{y2}\}$, $\text{var}2\{F_x\}$, $\text{var}2\{F_{y1}\}$, $\text{var}2\{F_{y2}\}$) are calculated incorrectly.

Note

Be careful in the measurement with a great frequency difference. Remember that in this case there is an additional frequency instability ($\sigma_{ao}(\tau) \leq 2.0 \times 10^{-3} \Delta f/f$). Therefore for precise frequency instability measuring it is recommended to set minimal frequency difference.

5.4 Measurement error

There are three types of measurement error in the device:

- frequency instability because of the measurement channels noise (**main error, “noise floor”**),
- frequency instability due to signals interference (**additional error, *spurious modulation***).
- frequency instability due to outside temperature changing (***temperature instability***).

5.4.1 **“Noise floor”**. It is the instability introduced by Comparators’ noise, when $\Delta f=0$. To measure this type of error use Power splitter ZFSC-2-1W+ and special short cables to supply the same signal to reference ($\ominus f_x$) and to one of tested ($\ominus f_y$) inputs of the Comparator (see p.5.5.4). At each input signal level should be more than 0.8Vrms. Then you can measure introduced by Comparator’s noise frequency instability.

5.4.2 ***Spurious modulation***. It is the additional instability of the Comparator when $\Delta f \neq 0$. In this case due to interference between input signals there is spurious sine-form phase modulation of signals inside the Comparator. We can measure the frequency and the amplitude of spurious phase modulation $-T_i(F)$ (in units of time). There are three modulation frequencies in the Comparator – $F = \Delta f, 10\Delta f$ and $20\Delta f$. There $\Delta f_i = f_x - f_y$ is frequency difference at comparator inputs (in assumption that both signal’s frequency is 5 MHz). When we have specified $T_i(F)$ values we can calculate introduced additional frequency instability for special Δf and τ value using frequency response of calculated frequency instability function. According the specifications we have ($\sigma_{ao}(\tau) \leq 2.0 \times 10^{-3} \Delta f/f$). The only way to reduce this kind of error is to decrease Δf .

5.4.3 ***Temperature instability***. Changing of outside temperature causes additional internal phase shift and frequency measurement error. We specify frequency instability of the Comparator less than $5.0 \cdot 10^{-16}$ for measured signals combinations – XY1, XY2 when $\tau \geq 1000$ s and outside temperature changing is less than 1 °C/hour.

5.5 Measurements schemes

Attention!

The signal at « $\ominus f_x$ » input of first comparator must always be connected independently from measurements scheme.

5.5.1 “*Two-oscillator, one-channel*” mode (Fig. 5.3). It is the simplest traditional mode, when we use only one measuring channel (first comparator – “ $\ominus f_x$ ” and “ $\ominus f_y$ ” inputs). In this case the results (mathematical expectation) is a total instability of both signals and comparators (we have shifted result). Table 5.4 shows available functions and corresponding mathematical expectation ($E \{ \dots \}$), calculated in supposition that frequency fluctuations of all signals and comparator channels are independent.

Table 5.4 Available functions for “two oscillators, one-channel” mode
(see VCH-314 Software Operating Manual)

Number	Calculated functions	Mathematical expectation
1	Mean Relative Freq. Diff. ($E\{F_{y1x}\}$)	$y_{y1}^N - y_x^N + y_{c1}^N$
2	RMS Relative Freq. Diff. ($\text{var}\{F_{y1x}\}$)	$\sqrt{\delta_{y1}^2 + \delta_x^2 + \delta_{c1}^2}$
3	RMS Two-sample Freq. Diff. ($\text{var2}\{F_{y1x}\}$)	$\sqrt{\sigma_{y1}^2 + \sigma_x^2 + \sigma_{c1}^2}$

where:

y_{y1}^N, y_x^N – averaged on total monitoring time $N \cdot \tau$, relative frequency deviation of f_x and f_{y1} signals from the nominal frequency;

y_{c1}^N – mean frequency difference, introduced by the comparator 1;

$\delta_y^2, \delta_x^2, \delta_{c1}^2$ – N-sample Allan variance of f_{y1}, f_x signals’ and comparator 1;

$\sigma_y^2, \sigma_x^2, \sigma_{c1}^2$ – Two sample Allan variance of f_{y1}, f_x signals’ and comparator 1.

Instability of the comparator $y_{c1}^N, \delta_{c1}, y_{c1}$ (“noise floor”) we can find, when the same signal is connected to both comparator inputs. If we are looking for the instability of f_{y1} signal the second and the third terms of mathematical expectations’ represents shift or *systematic error* due to reference and comparator. When using this scheme we have to be sure that reference signal’s and comparator’s instability is much less than of tested signal.

As a measure of measurement uncertainty or occasional error for two samples Allan variance estimate $\text{var2}(F_{y1x})$ we can use relative root mean square deviation

$$d = \sqrt{\frac{E(\sigma_{xy1,N}^2)^2 - [E(\sigma_{xy1,N}^2)]^2}{[E(\sigma_{xy1,N}^2)]^2}} \quad (5.2)$$

It is shown [2] that

$$d \leq \sqrt{\frac{2}{N}} \quad (5.3)$$

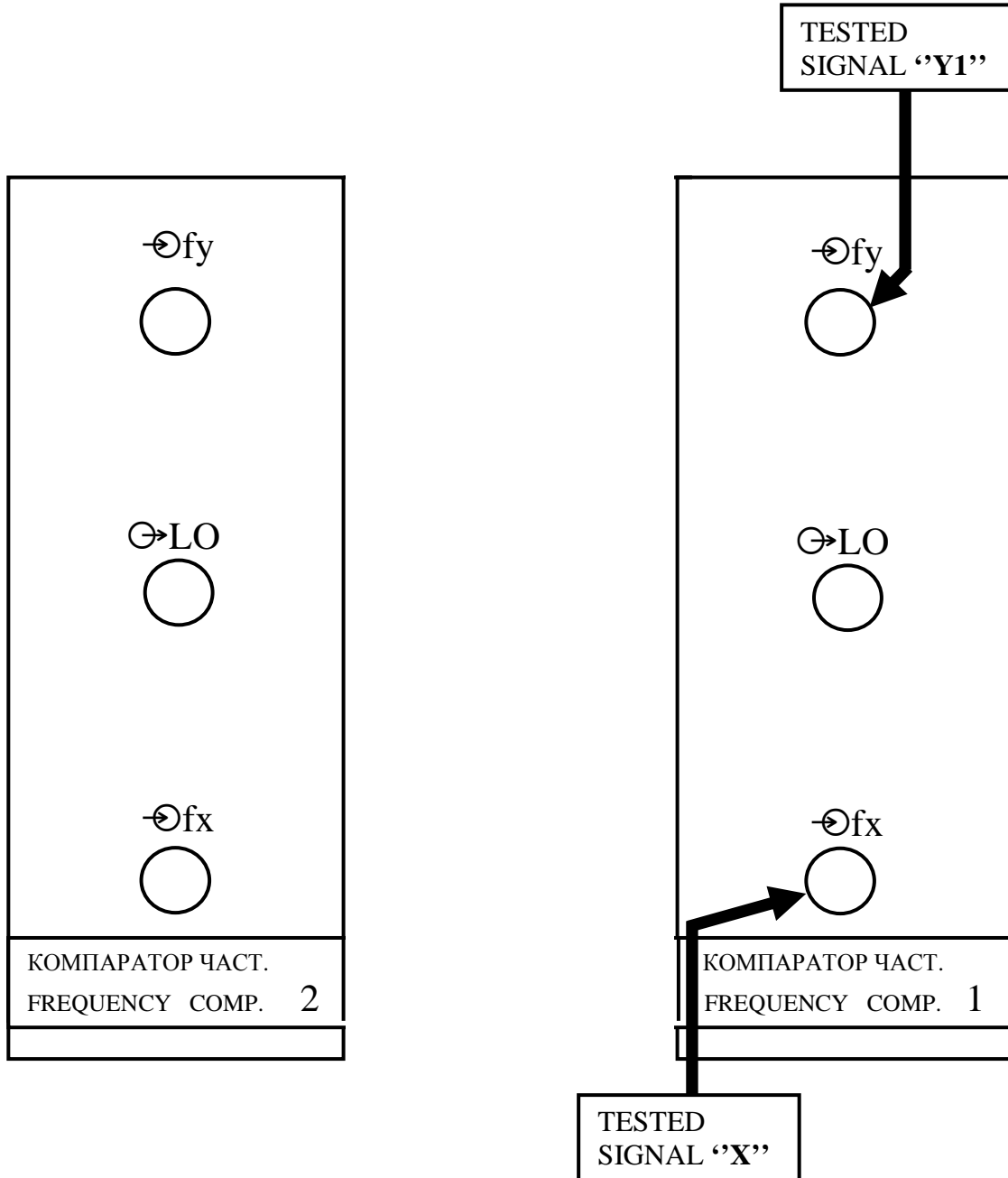


Fig.5.3 “Two-oscillators, one-channel” mode.
Signals connecting

5.5.2. “Two-oscillators, two-channels mode” (Fig. 5.4). It is the modification of two oscillator’s mode when by using two identical measuring channels we can reduce comparator’s measurements error. In this case we supply the same signals f_x and f_y to both comparators.

Table 5.5 shows mathematical expectation of calculated functions [3] (see p. 3.2 Software Operating Manual). This relations help to estimate first systematic error due to instability of comparators and reference signal. We see that all results are shifted up).

Table 5.5 Available functions for “two-oscillators, two-channels” mode
(see VCH-314 Software Operating Manual)

Number	Calculated functions	Mathematical expectation	Notes
1	Mean Relative Freq. Diff. (E{ F _{y1x} })	$y_{y1}^N - y_x^N + y_{c1}^N$	*
2	Mean Relative Freq. Diff. (E{ F _{y2x} })	$y_{y2}^N - y_x^N + y_{c2}^N$	*
3	Mean Relative Freq. Diff. (E{ F _{y1y2} })	$y_{c1}^N - y_{c2}^N$	**
4	RMS Relative Freq. Diff. (var{ F _{y1x} })	$\sqrt{\delta_{y1}^2 + \delta_x^2 + \delta_{c1}^2}$	*
5	RMS Relative Freq. Diff. (var{ F _{y2x} })	$\sqrt{\delta_{y2}^2 + \delta_x^2 + \delta_{c2}^2}$	*
6	RMS Relative Freq. Diff. (var{ F _{y1y2} })	$\sqrt{\delta_{c1}^2 + \delta_{c2}^2}$	**
7	RMS Relative Freq. Diff. (var{ F _x })	$\sqrt{\delta_x^2 + \delta_y^2}$	***
8	RMS Relative Freq. Diff. (var{ F _{y1} })	$\sqrt{\delta_{c1}^2}$	**
9	RMS Relative Freq. Diff. (var{ F _{y2} })	$\sqrt{\delta_{c2}^2}$	**
10	RMS Two-sample Freq. Diff.(var2{ F _{y1x} })	$\sqrt{\sigma_{y1}^2 + \sigma_x^2 + \sigma_{c1}^2}$	*
11	RMS Two-sample Freq. Diff.(var2{ F _{y2x} })	$\sqrt{\sigma_{y2}^2 + \sigma_x^2 + \sigma_{c2}^2}$	*
12	RMS Two-sample Freq. Diff.(var2{ F _{y1y2} })	$\sqrt{\sigma_{c1}^2 + \sigma_{c2}^2}$	**
13	RMS Two-sample Freq. Diff.(var2{ F _x })	$\sqrt{\sigma_y^2 + \sigma_x^2}$	***
14	RMS Two-sample Freq. Diff.(var2{ F _{y1} })	$\sqrt{\sigma_{c1}^2}$	**
15	RMS Two-sample Freq. Diff.(var2{ F _{y2} })	$\sqrt{\sigma_{c2}^2}$	**

Notes: * – results, having systematic error due to reference and comparators;
 ** – results, specifying instability of comparators;
 *** – results, having systematic error due to reference only.

For functions number 7 and 13 (cross-variance) we have the second systematic error, related with time delay of measuring in two channels.

Really functions 7 and 13 are autocorrelation estimates which depends on measurement time – τ , frequency fluctuations spectra and time delay between

measuring in different channels – Δ (Δ is time in seconds of “Time Samples” diagram, curve F_{y2y1} , see p. 7.3 Software Operating Manual).

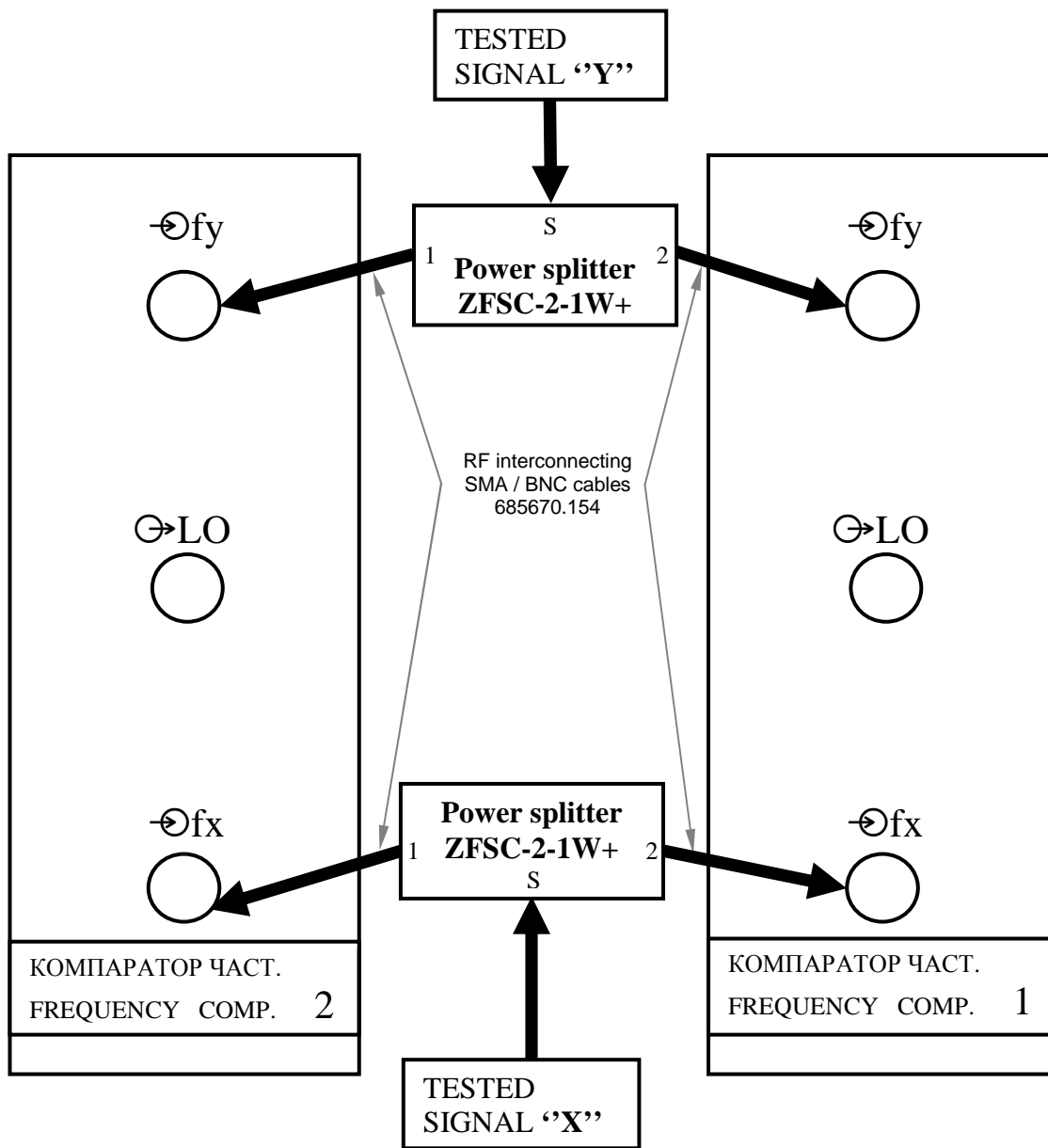


Fig.5.4 “Two-oscillators, two-channels” mode.
Signals connecting

For the two-sample Allan variance $\sigma_y(\tau)$ (function 13) we have

$$\text{var } 2\{F_x\} = \sqrt{\sigma_y^2(\tau) r^2(\Delta)}, \quad (5.4)$$

where: $r(\Delta)$ – auto-correlation function of measured frequency fluctuations.

If we use traditional frequency fluctuations model

$$S_y(f) = \sum_{\alpha=-2}^2 h_\alpha f^\alpha, \quad (5.5)$$

In frequency domain we have the relation

$$r^2(\Delta, \alpha, f_h, M, \tau) = \frac{\int_0^{\infty} f^\alpha \left(\frac{f_h^2}{f^2 + f_h^2} \right) \left(\frac{\sin^2(M\pi f T)}{(M\pi f T)^2} \right) \left(\frac{\sin^4(\pi f \tau)}{(\pi f \tau)^2} \right) \cos(2\pi f \Delta) df}{\int_0^{\infty} f^\alpha \left(\frac{f_h^2}{f^2 + f_h^2} \right) \left(\frac{\sin^2(M\pi f T)}{(M\pi f T)^2} \right) \left(\frac{\sin^4(\pi f \tau)}{(\pi f \tau)^2} \right) df} \quad (5.6)$$

Figure 5.5 shows $r^2(\Delta, \alpha, f_h, M, \tau)$ diagrams for different α values when $f_h=5$ Hz, $M=32$, $T=10$ ms, $\tau=1$ and 10 s (it is measuring condition when $B=10$ Hz).

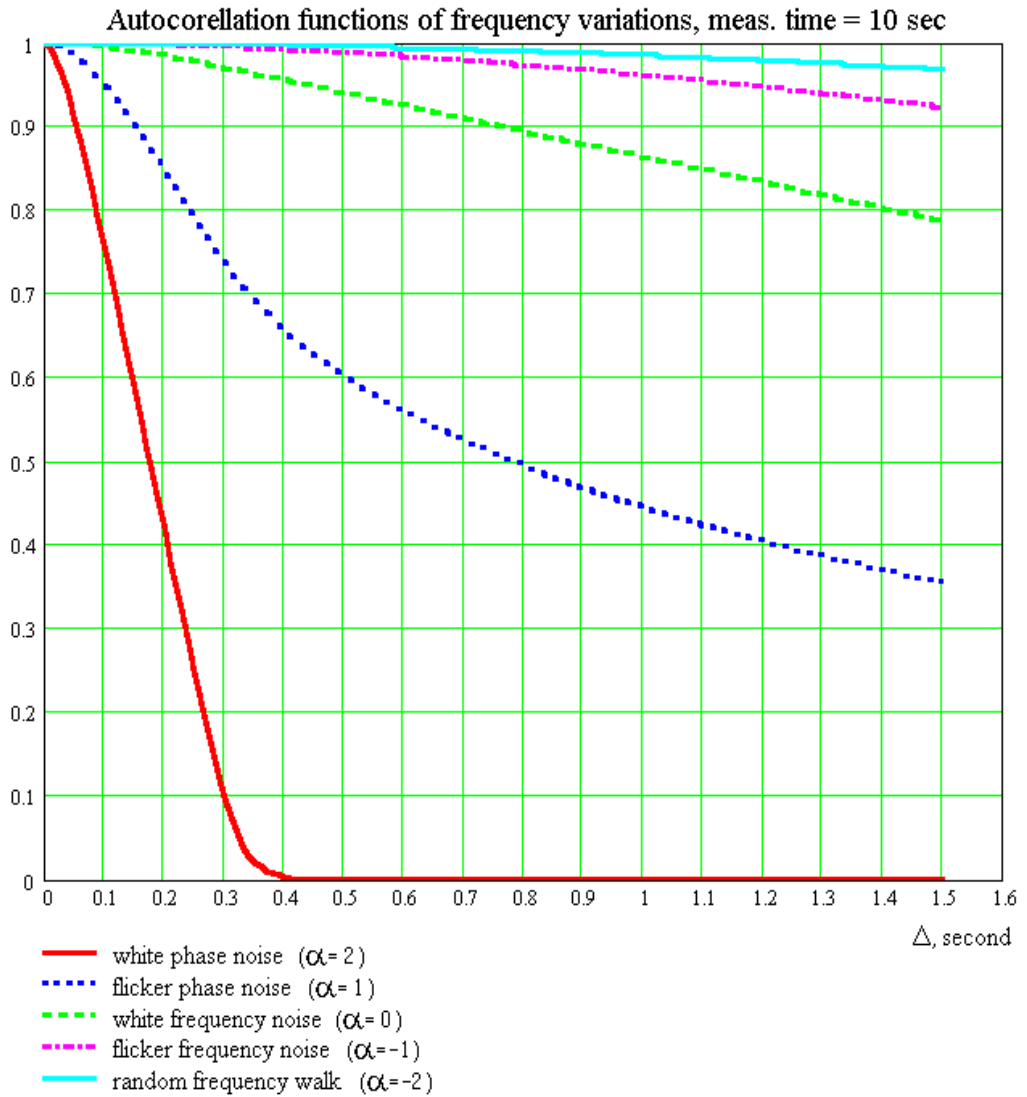


Fig.5.5

One can see that we have enough measuring accuracy if $\Delta < 0.1$ s. When we start measuring Software performs channel synchronisation and set $\Delta < 0.0001$ s. For “two-oscillators, two-channels” measuring mode this value stay near the same in time and there is no need to take care of it.

Occasional error for this case corresponds to the formula (5.3).

5.5.3 “Three oscillators, two-channel” mode (Fig. 5.6). It is the most advanced mode, when we use for instability measuring three oscillators and two identical measuring channels. One can see three main advantages of this mode:

- simultaneous frequency instability measuring of three oscillator’s
- calculation instability of each individual oscillator
- reduced systematic error due to instability of reference and comparator.

Table 5.6 shows calculated functions and corresponding mathematical expectation [3] (see p. 3.2 Software Operating Manual).

Table 5.6 Available functions for “three oscillators, two-channels” mode

(see VCH-314 Software Operating Manual)

Number	Calculated functions	Mathematical expectation	Notes
1	Mean Relative Freq. Diff. (E{ F _{y1x} })	$y_{y1}^N - y_x^N + y_{c1}^N$	*
2	Mean Relative Freq. Diff. (E{ F _{y2x} })	$y_{y2}^N - y_x^N + y_{c2}^N$	*
3	Mean Relative Freq. Diff. (E{ F _{y1y2} })	$y_{y2}^N - y_{y1}^N + y_{c1}^N - y_{c2}^N$	*
4	RMS Relative Freq. Diff. (var{ F _{y1x} })	$\sqrt{\delta_{y1}^2 + \delta_x^2 + \delta_{c1}^2}$	*
5	RMS Relative Freq. Diff. (var{ F _{y2x} })	$\sqrt{\delta_{y2}^2 + \delta_x^2 + \delta_{c2}^2}$	*
6	RMS Relative Freq. Diff. (var{F _{y1y2} })	$\sqrt{\delta_{y1}^2 + \delta_{y2}^2 + \delta_{c1}^2 + \delta_{c2}^2}$	*
7	RMS Relative Freq. Diff. (var{F _x })	$\sqrt{\delta_x^2}$	***
8	RMS Relative Freq. Diff. (var{F _{y1} })	$\sqrt{\delta_{y1}^2 + \delta_{c1}^2}$	**
9	RMS Relative Freq. Diff. (var{F _{y2} })	$\sqrt{\delta_{y2}^2 + \delta_{c2}^2}$	**
10	RMS Two-sample Freq. Diff.(var2{F _{y1x} })	$\sqrt{\sigma_{y1}^2 + \sigma_x^2 + \sigma_{c1}^2}$	*
11	RMS Two-sample Freq. Diff.(var2{F _{y2x} })	$\sqrt{\sigma_{y2}^2 + \sigma_x^2 + \sigma_{c2}^2}$	*
12	RMS Two-sample Freq. Diff.(var2{F _{y1y2} })	$\sqrt{\sigma_{y1}^2 + \sigma_{y2}^2 + \sigma_{c1}^2 + \sigma_{c2}^2}$	*
13	RMS Two-sample Freq. Diff.(var2{F _x })	$\sqrt{\sigma_x^2}$	***
14	RMS Two-sample Freq. Diff.(var2{F _{y1} })	$\sqrt{\sigma_{y1}^2 + \sigma_{c1}^2}$	**
15	RMS Two-sample Freq. Diff.(var2{F _{y2} })	$\sqrt{\sigma_{y2}^2 + \sigma_{c2}^2}$	**

Notes: * – results, having systematic error due to instability of reference and comparators;

- ** – results, having systematic error due to instability of comparators;
- *** – results, having no systematic error.

One can see that only “x” signal we can measure without systematic error.

In this case for functions 7,8,9, 13,14,15 there is the second systematic error, coursed by time delay of measuring in channels (Δ). To have appropriate measurements precision you need to find maximal allowable Δ^* value by using relation (5.6) and figures 5.4, 5.5 and to be sure that while measuring $\Delta \leq \Delta^*$. But in this case user should be careful because delay Δ is growing in time after measuring start

$$\Delta = |\Delta_o + 10^K y_{y1y2}t|, \tag{5.7}$$

where: $\Delta_o < 0.0001$ s – initial Δ value;

y_{y1y2} – relative frequency difference of Y_1 and Y_2 signals;

K – multiplication factor, t – time elapsed from measuring start .

If it is impossible to guarantee $\Delta \leq \Delta^*$ condition while measuring you may use only part of data and “Recalc” function (see Section 6.7 Software Operating Manual).

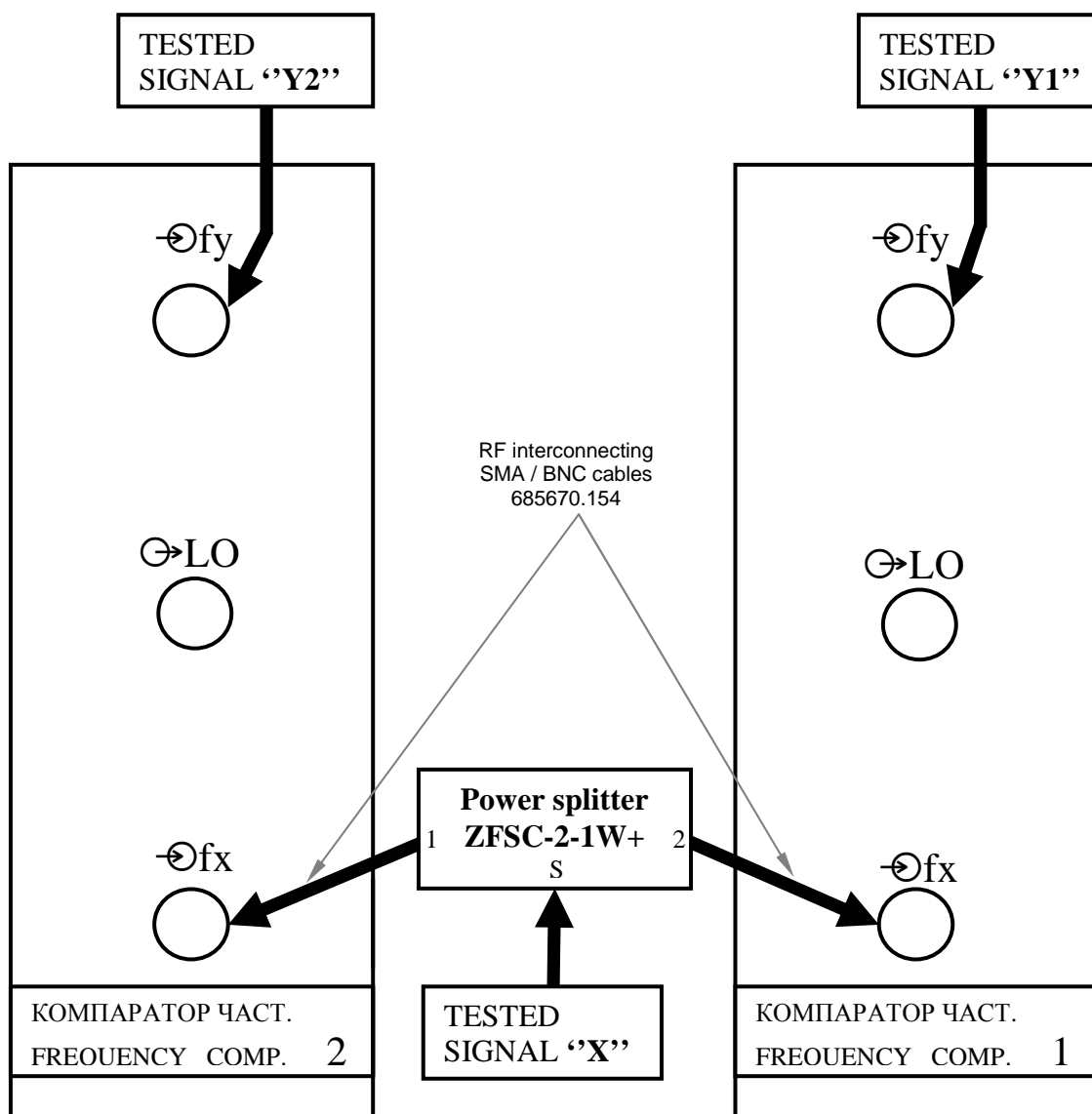


Fig.5.6 “Three oscillators two-channels” mode.
Signals connecting.

To estimate occasional error for $\text{var2}\{F_x\}$, $\text{var2}\{F_{y1}\}$ and $\text{var2}\{F_{y2}\}$ we can use the following formulas [4].

$$d_x \leq \sqrt{\frac{A}{N} \left(2 + \frac{\sigma_{y1}^2 + \sigma_{c1}^2}{\sigma_x^2} + \frac{\sigma_{y2}^2 + \sigma_{c2}^2}{\sigma_x^2} + \frac{(\sigma_{y1}^2 + \sigma_{c1}^2)(\sigma_{y2}^2 + \sigma_{c2}^2)}{\sigma_x^4} \right)}, \quad (5.8)$$

$$d_{y1} \leq \sqrt{\frac{A}{N} \left(2 + \frac{\sigma_x^2 + \sigma_{c1}^2}{\sigma_{y1}^2} + \frac{\sigma_{y2}^2 + \sigma_{c1}^2 + \sigma_{c2}^2}{\sigma_{y1}^2} + \frac{(\sigma_x^2 + \sigma_{c1}^2)(\sigma_{y2}^2 + \sigma_{c1}^2 + \sigma_{c2}^2)}{\sigma_{y1}^4} \right)}, \quad (5.9)$$

$$d_{y2} \leq \sqrt{\frac{A}{N} \left(2 + \frac{\sigma_{y1}^2 + \sigma_{c1}^2 + \sigma_{c2}^2}{\sigma_{y2}^2} + \frac{\sigma_x^2 + \sigma_{c1}^2}{\sigma_{y2}^2} + \frac{(\sigma_{y1}^2 + \sigma_{c1}^2 + \sigma_{c2}^2)(\sigma_x^2 + \sigma_{c1}^2)}{\sigma_{y2}^4} \right)} \quad (5.10)$$

where: A – depends on correlational features of tested signals, ($1 \leq A < 2$)

Occasional error formulas help to find minimal N -value to have appropriate measurements accuracy.

Notes:

All error calculations were made supposing that frequency fluctuations of tested signals' and comparators' are independent. It is close to real practice only for short-term stability ($\tau=1$; 10 and may be 100 s).

5.5.4 *The main error measuring (“noise floor” when $\Delta f/f=0$).* Connect signals according Fig. 5.7 and set measuring parameters according Fig. 5.8.

After waiting for 4 hours initiate measuring. Table 5.7 shows calculated functions’ mathematical expectation.

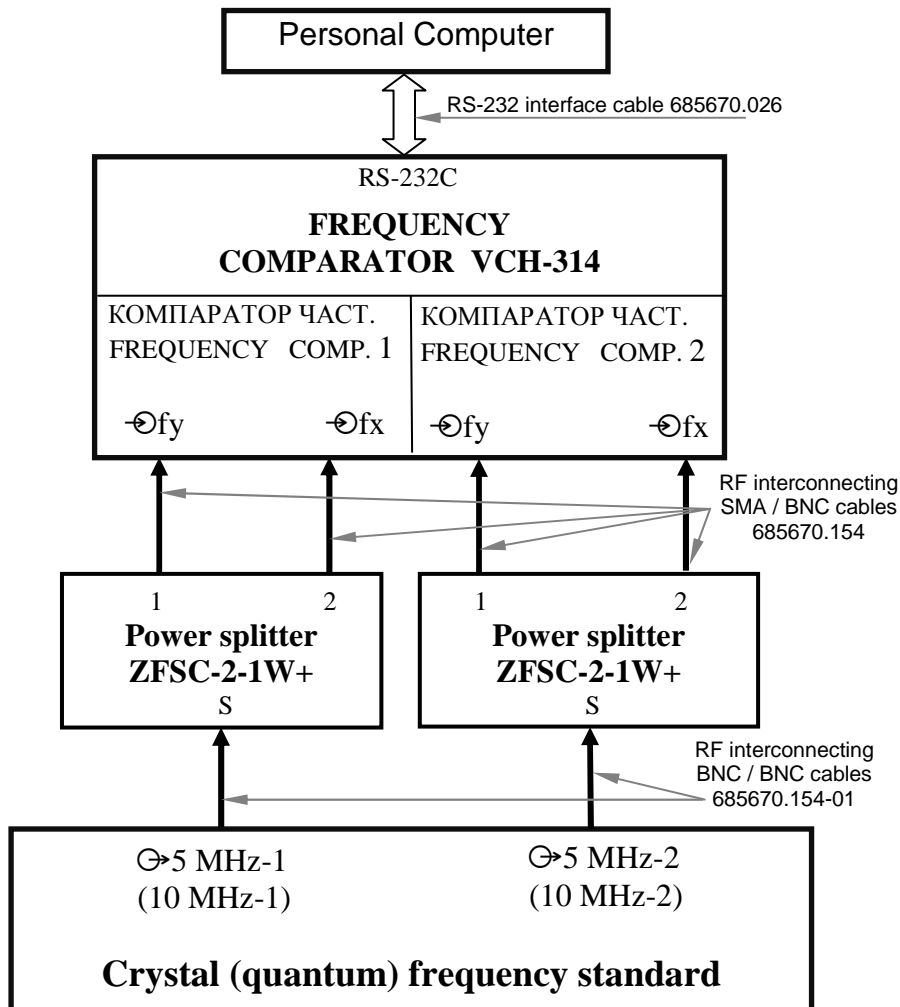


Fig. 5.7 Signals connecting to measure the main instability of the comparator (“noise floor” when $\Delta f/f=0$)

The comparator is perfect if measured statistical functions describing the frequency instability are not more values given in the table 2.1

Table 5.7 The mathematical expectation of calculated functions' when comparators “noise floor” measuring.

(see VCH-314 Software Operating Manual)

Number	Calculated functions	Mathematical expectation	Notes
1	Mean Relative Freq. Diff. ($E\{F_{y1x}\}$)	y_{c1}^N	
2	Mean Relative Freq. Diff. ($E\{F_{y2x}\}$)	y_{c2}^N	
3	Mean Relative Freq. Diff. ($E\{F_{y1y2}\}$)	$y_{c1}^N - y_{c2}^N$	
4	RMS Relative Freq. Diff. ($\text{var}\{F_{y1x}\}$)	$\sqrt{\delta_{c1}^2}$	*
5	RMS Relative Freq. Diff. ($\text{var}\{F_{y2x}\}$)	$\sqrt{\delta_{c2}^2}$	*
6	RMS Relative Freq. Diff. ($\text{var}\{F_{y1y2}\}$)	$\sqrt{\delta_{c1}^2 + \delta_{c2}^2}$	*
7	RMS Relative Freq. Diff. ($\text{var}\{F_x\}$)	0	**
8	RMS Relative Freq. Diff. ($\text{var}\{F_{y1}\}$)	$\sqrt{\delta_{c1}^2}$	*
9	RMS Relative Freq. Diff. ($\text{var}\{F_{y2}\}$)	$\sqrt{\delta_{c2}^2}$	*
10	RMS Two-sample Freq. Diff. ($\text{var2}\{F_{y1x}\}$)	$\sqrt{\sigma_{c1}^2}$	*
11	RMS Two-sample Freq. Diff. ($\text{var2}\{F_{y2x}\}$)	$\sqrt{\sigma_{c2}^2}$	*
12	RMS Two-sample Freq. Diff. ($\text{var2}\{F_{y1y2}\}$)	$\sqrt{\sigma_{c1}^2 + \sigma_{c2}^2}$	*
13	RMS Two-sample Freq. Diff. ($\text{var2}\{F_x\}$)	0	**
14	RMS Two-sample Freq. Diff. ($\text{var2}\{F_{y1}\}$)	$\sqrt{\sigma_{c1}^2}$	*
15	RMS Two-sample Freq. Diff. ($\text{var2}\{F_{y2}\}$)	$\sqrt{\sigma_{c2}^2}$	*

Notes: * – results, having systematic error due to instability of comparators;

** – results, having no systematic error.

One can see that only “x” signal we can measure without systematic error.

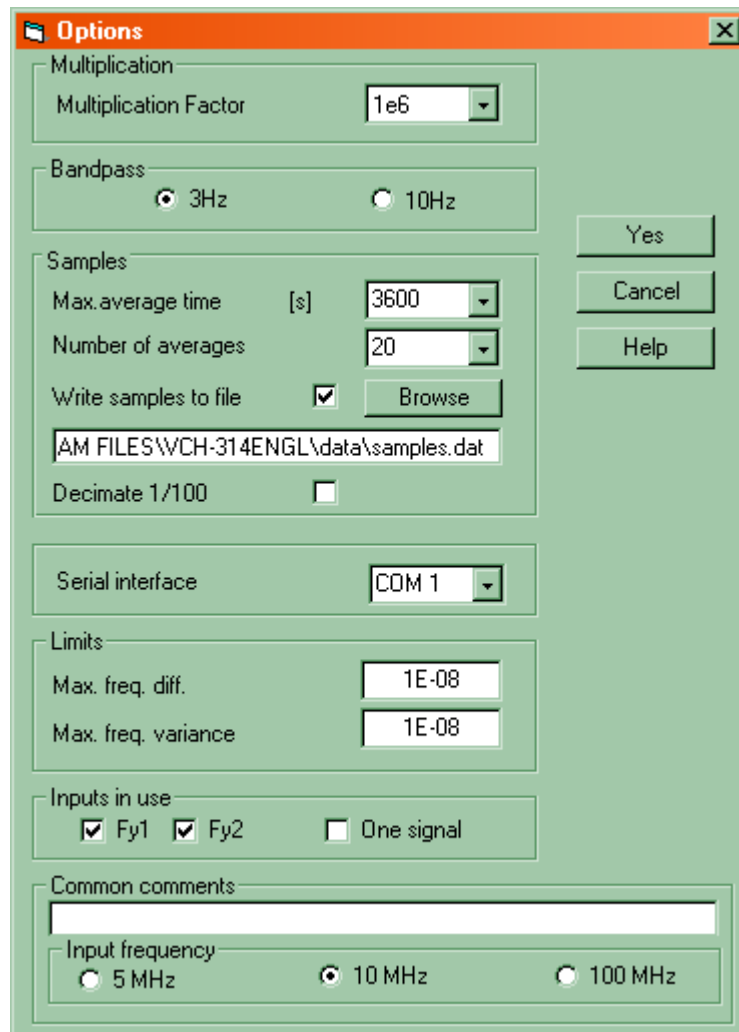


Fig. 5.8 Parameters list for the main instability measuring

5.5.5 Frequency comparators' additional error measuring (when $\Delta f/f \neq 0$). Connect signals of 5 MHz frequency according Fig. 5.4. At least one signal X or Y should be capable to change frequency. Set measured relative frequency difference in the range $(5.1 \div 5.5) \times 10^{-9}$.

Set parameters of measuring according Fig. 5.9, and start measuring program. When measuring is finished find Allan variance values for 1-second average time ($\text{var2}(\text{Fy1x})$, $\text{var2}(\text{Fy2x})$) and relative frequency difference ($E(\text{Fy1x})$, $E(\text{Fy2x})$).

The comparator is perfect if: $\text{var2} \{ \text{Fy1x} \} < 0.002 \times E \{ \text{Fy1x} \}$;
 $\text{var2} \{ \text{Fy2x} \} < 0.002 \times E \{ \text{Fy2x} \}$.

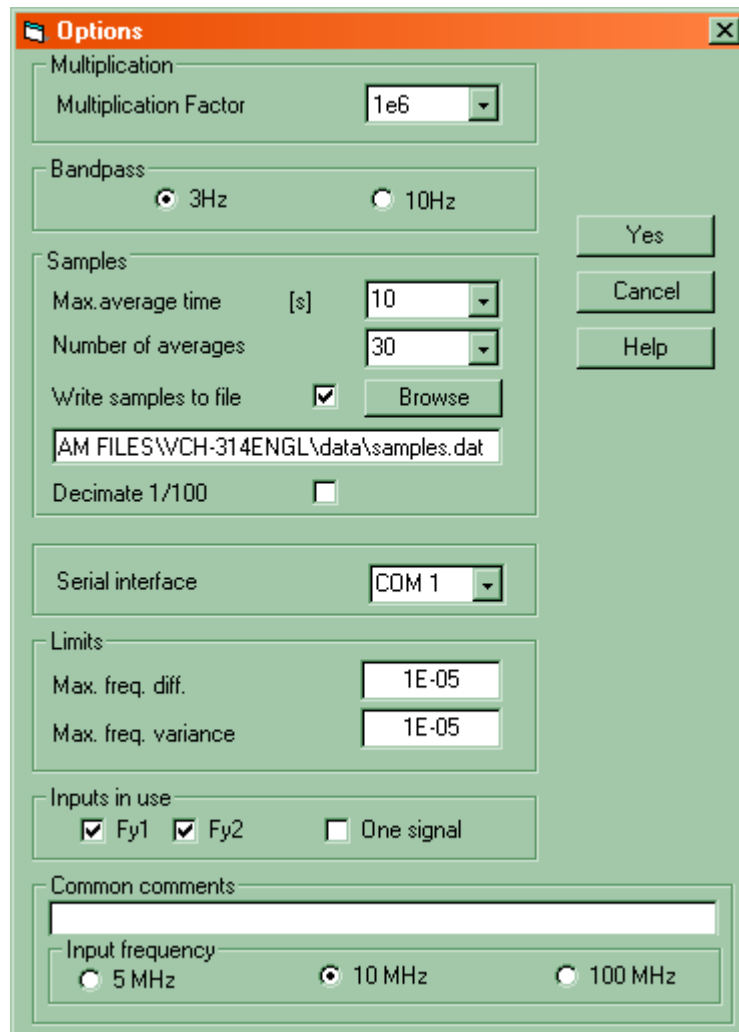


Fig. 5.9 Parameters list for additional instability measuring

References:

1. J. Gros Lambert, D. Fest, M. Oliver, J.J. Gagnepain. CHARACTERIZATION OF FREQUENCY FLUCTUATIONS BY CROSS-CORRELATIONS AND BY USING TREE OR MORE OSCILLATORS. Proc. 35th Ann. Freq. Control Symposium, USAERADCOM, Ft. Monmouth, NJ 07703, May 1981.
2. KAZUYUKI YOSHIMURA. Characterization of Frequency Stability: Uncertainty Due to the Autocorrelation of the Frequency Fluctuations. IEEE TRANSACTIONS ON INSTRUMENTATION AND MEASUREMENT. VOL. IM-27, NO.1, MARCH 1978.
3. И.Н. ЧЕРНЫШЕВ. АППАРАТУРНАЯ СОСТАВЛЯЮЩАЯ СИСТЕМАТИЧЕСКОЙ ПОГРЕШНОСТИ ИЗМЕРЕНИЯ НЕСТАБИЛЬНОСТИ ЧАСТОТЫ МЕТОДОМ ТРЕХ ГЕНЕРАТОРОВ. ТЕХНИКА СРЕДСТВ СВЯЗИ. Серия РИТ. 1990, выпуск 2.
4. Г. П. ПАШЕВ, И. Н. ЧЕРНЫШЕВ. ПОГРЕШНОСТЬ ИЗМЕРЕНИЯ НЕСТАБИЛЬНОСТИ ЧАСТОТЫ МЕТОДОМ ТРЕХ ГЕНЕРАТОРОВ. ТЕХНИКА СРЕДСТВ СВЯЗИ. Серия РИТ. 1987, выпуск 6.